

## **VARONIS® DATADVANTAGE®— DIRECTORY SERVICES**

### Features and Benefits

#### **Visibility**

- View Directory Services hierarchy in the DatAdvantage GUI
- View domains, OU's, computers, and groups and other domain objects in the DatAdvantage GUI

#### **Complete Audit Trail**

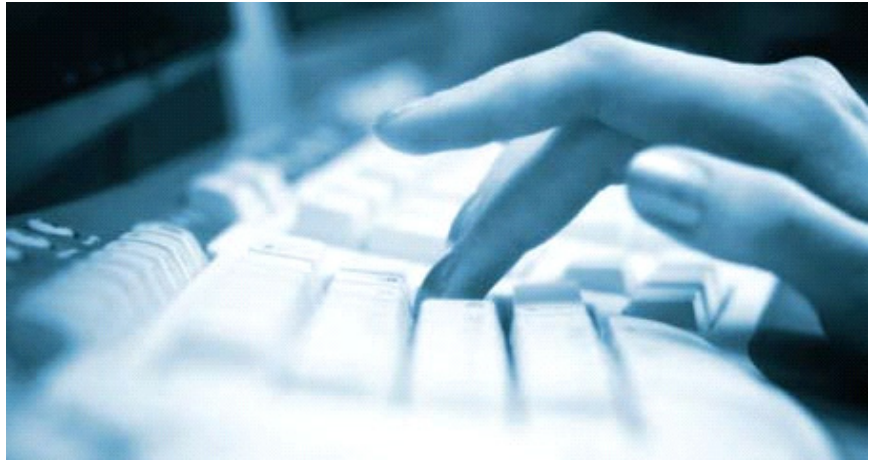
- Track who made changes in Active Directory, and when

#### **Recommendations and Modeling**

- Recommendations on unused groups and group memberships
- Model changes without affecting production environments

#### **Extensible Framework**

- Windows, Exchange, SharePoint, and UNIX available with DatAdvantage for Windows, DatAdvantage for Exchange, DatAdvantage for SharePoint, and DatAdvantage for UNIX
- Data classification information available with the IDU Classification Framework®
- Involve data owners and business users directly with DataPrivilege®



Varonis® DatAdvantage® for Directory Services

## **Comprehensive Data Governance**

### **CHALLENGE**

Directory Services are critical—every user authenticates to Active Directory or LDAP, and nearly every ACL, mailbox, and SharePoint site, and more and more applications refer to users and groups in these directories for authentication, access control, and storage of critical attributes. As critical as directory services are, changes and other activities are often difficult to audit and analyze.

### **SOLUTION**

The Varonis Metadata Framework™ addresses these challenges by providing a complete representation of the domain hierarchy in the familiar DatAdvantage interface, right alongside other monitored infrastructure components, like Windows Servers, NAS devices, SharePoint sites, and Exchange mailboxes and public folders,\* as well as an audit trail of all Active Directory activity, including changes to OU's groups, group policy, and logon/logoff events.

Varonis DatAdvantage for Directory Services presents:

- A visual representation of the entire forest/domain hierarchy
- Recommendations on unused group memberships\*
- What-if/change modeling capabilities for groups and ACL's

### VISUAL REPRESENTATION OF YOUR DOMAIN

Active Directory hierarchies can get extremely complex even in small organizations. In large organizations, sometimes the MMC snap-in for AD doesn't even load. DatAdvantage is built to display, filter, and analyze large, complex hierarchical structures, and extends those capabilities to Active Directory domains and Forests.

### COMPLETE AUDIT TRAIL

Right click on any OU, group, or AD object and jump to the log to view a complete audit trail of all changes and activity on that object over any time period. Correlate these events with file system activity and other changes.



### RECOMMENDATIONS AND MODELING

By combining the information on who can access the data, the audit trail detailing who is accessing the data, and sophisticated bi-directional cluster analysis, Varonis DatAdvantage for Windows, UNIX, Exchange, and SharePoint provide actionable intelligence on where excess group memberships can be safely removed without affecting normal business processes. DatAdvantage also provides the ability to model and simulate group changes in its sandbox so they can be tested without affecting the production environment.

### SUMMARY

With Varonis DatAdvantage for Directory Services, organizations achieve enterprise-wide governance of Active Directory, with complete mapping and visualization of the hierarchical structure, a complete audit trail of Active Directory changes and activity, and the ability to combine these metadata streams to simulate changes and identify excessive group membership.

#### WORLDWIDE HEADQUARTERS

1250 Broadway, 31<sup>st</sup> Floor  
New York, NY 10001  
Phone: 877-292-8767  
[sales@varonis.com](mailto:sales@varonis.com)

#### EUROPE, MIDDLE EAST AND AFRICA

55 Old Broad Street  
London, United Kingdom EC2M 1RX  
Phone: +44(0)20 3402 6044  
[sales-europe@varonis.com](mailto:sales-europe@varonis.com)